

## STM Cisco Webex Board Pro 55" display specific, mobile stand system

**Item no.: 5843**

The STM Cisco Webex Board Pro 55" is a mobile stand system specifically designed for the Cisco Webex Board Pro 55".

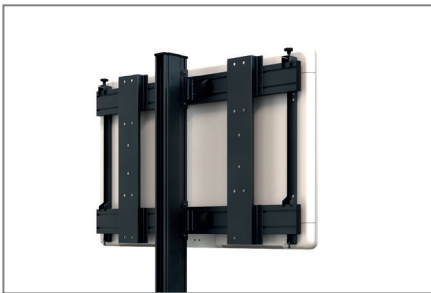
The hole pattern of the mobile stand system has been designed and optimised specifically for Cisco collaboration room systems.

Locking screws on the screen mounts secure the screen against unhooking and falling down.

Cabling is organised and held together by cable clips along the rails and column.

The surfaces of the STM Cisco Webex Board Pro 55" are finished with a solvent free, impact and scratch resistant powder coating in black.

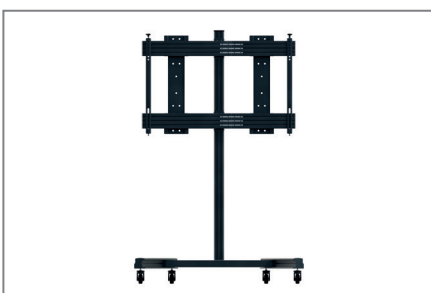
The maximum load capacity is 50 kg.



Cable routing along the rails



Castors with locking brake



Stable construction



## STM Cisco Webex Board Pro 55" display specific, mobile stand system

**Item no.: 5843**

- Mobile stand system
- Display specific Cisco Webex Board Pro 55"
- Hole pattern optimised for Cisco Webex Board Pro 55"
- Dimensions: H 2005 x W 1250 x D 1007 mm
- Cable routing by cable clips
- Locking screws - secures the screen against unhooking and falling down
- 50 kg max. load
- Colour: black
- Space saving
- Solvent free, impact and scratch resistant powder coating

